

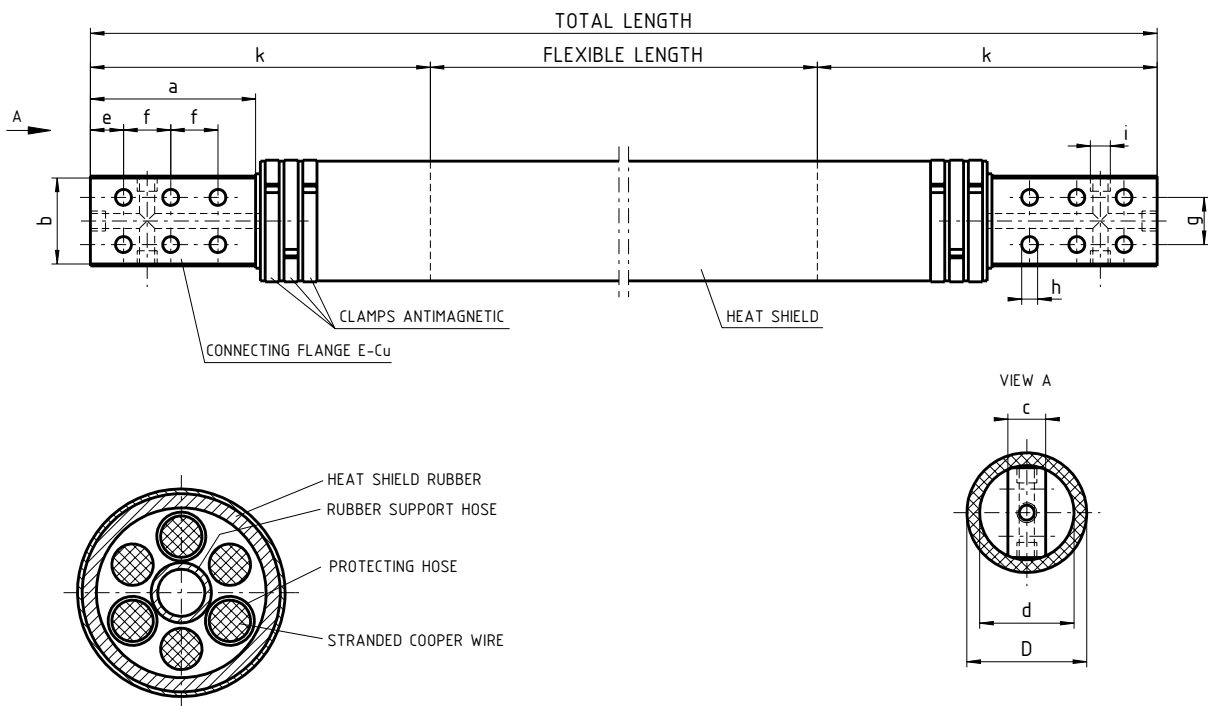
HOMA manufactured their water-cooled cables for electric furnaces (AC and DC) by a fully automatically working production line.

HOMA is using for the production of their water-cooled cables only:

- high-quality material by all means: copper-wire, copper-ropes, connection heads and outer-hoses. The quality of our outer-hoses is improved by many steel-plants world-wide.
- The copper ropes are pressed to the cablehead. This pressing procedure will be done in one production step and not as usual segmental.

Due to the high-quality of materials as well as our production technology we are supplying to our customers a top quality product with a long life-time.

In the following we have listed our scope of standard cables but also we are able to produce the cables in acc. to the customer request in regard to the dimension of cable head, number of holes, etc.



Cable-type	Cu-cross-section [mm <sup>2</sup> ]	Dimension - Table [mm]										
		a	b	c	d	D	e	f	g	h	i	k
HO 2005	2000	175	92	35	100	13	30	50	50	18	3/4"	350
HO 2406	2400	200	92	40	100	13	20	60	60	18	1"	375
HO 2807	2800	210	98	50	110	13,5	25	50	60	18	1"	440
HO 3208	3200	210	110	50	120	13,5	20	50	60	18	1"	430
HO 3609	3600	210	120	50	133	14	25	50	65	18	1"	440
HO 4010	4000	300	140	50	150	14	40	63,5	75	18	1"	530
HO 4411	4400	300	140	50	150	14	40	63,5	75	18	1"	530
HO 4812	4800	300	140	60	160	14	40	63,5	75	22	1"	530
HO 5213	5200	300	155	60	170	14	40	63,5	75	22	1"	530
HO 5614	5600	300	170	60	180	14	40	63,5	75	22	1"	530
HO 6015	6000	300	170	60	190	14	40	63,5	75	22	1"	530