



HOMA
Hochstromtechnik

FURNACE-COMPONENTS



ELECTRODE ARMS



CURRENT CABLES



HIGH VOLT LINES

HIGH



HOMA Workshop-Photo



HOMA Workshop-Photo

High current lines transformer house (delta closure)

Our high current lines will be designed, manufactured and supplied in accordance to the customer requirement. During the engineering stage we made all electrical and mechanical calculations to receive the optimum performance. Our high-current lines are made of copper tubes or copper bars with an optimum of cooling.

Power conducting electrode arms

After clarification of the technical data we design and produce electrode arms in accordance to our design. Also we supply all corresponding technical calculations.

Our main focus for design and production of electrode arms is the copper/steel cladded performance. Our production is certified by DIN EN ISO 9001.

All our products are featuring with their long lifetime, low maintenance and a high efficiency.

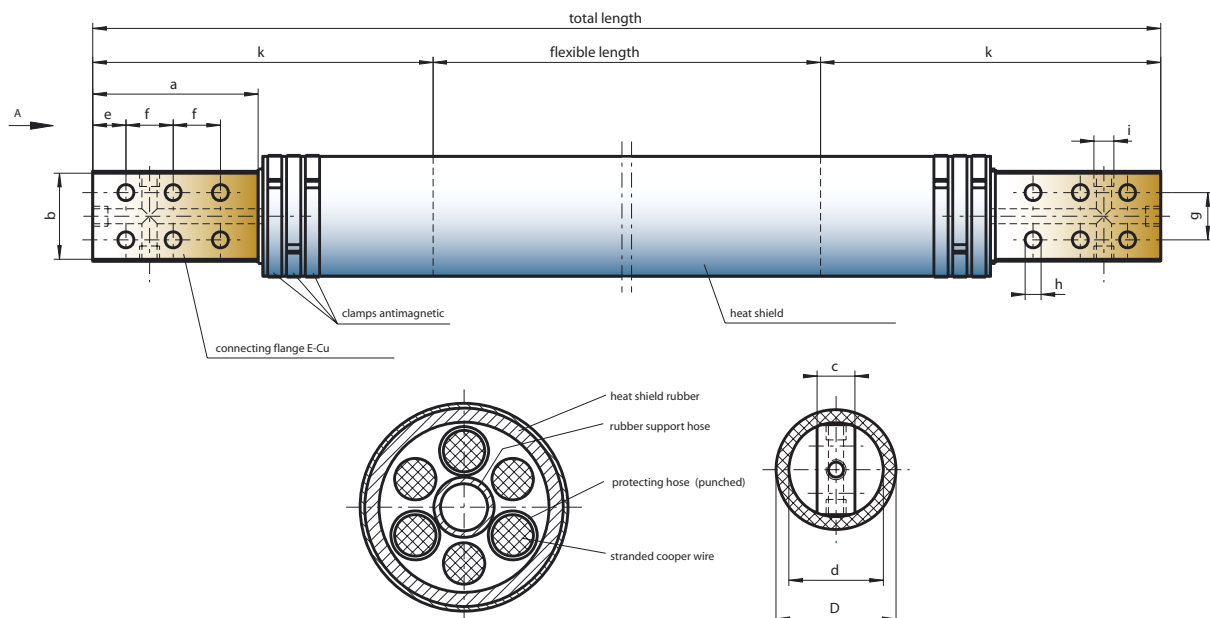


The water cooled high current cables made by HOMA are providing a constant high quality, what has approved itself in many steelworks.

The copper ropes are pressed to the cablehead. This pressing procedure will be done in one production step and not as usual segmental. Due to the high-quality of materials as well as our production technology we are supplying to our customers a top quality product with a long life-time.

The properties of our cables are:

- ▶ Long lifetime
- ▶ Low losses
- ▶ Low maintenance



We also produce and supply all cables in accordance to the requirements of our customer. Also we are prepared to give consulting service.

Cable-type	Cross-section (mm ²)	dimension-table (mm)										
		a	b	c	d	D	e	f	g	h	i	k
HO 2005	2000	175	92	35	100	13	30	50	50	18	3/4"	350
HO 2406	2400	200	92	40	100	13	20	60	60	18	1"	375
HO 2807	2800	210	98	50	110	13,5	25	50	60	18	1"	440
HO 3208	3200	210	110	50	120	13,5	20	50	60	18	1"	430
HO 3609	3600	210	120	50	133	14	25	50	65	18	1"	440
HO 4010	4000	300	140	50	150	14	40	63,5	75	18	1"	530
HO 4411	4400	300	140	50	150	14	40	63,5	75	18	1"	530
HO 4812	4800	300	140	60	160	14	40	63,5	75	22	1"	530
HO 5213	5200	300	155	60	170	14	40	63,5	75	22	1"	530
HO 5614	5600	300	170	60	180	14	40	63,5	75	22	1"	530
HO 6015	6000	300	170	60	190	14	40	63,5	75	22	1"	530

We provide:

- ▶ Technical Consulting Service
– Mechanical and/or Electrical –
- ▶ Engineering
- ▶ Production
- ▶ Repairs
- ▶ Assembly work and supervision

Contact:

HOMA Hochstromtechnik GmbH
Essener Str. 2-24
D-46047 Oberhausen

Tel. +49 (0) 208 / 8596 - 300
Fax +49 (0) 208 / 8596 - 399

www.homa-ob.de
e-mail: info@homa-ob.de